

INDIAN NOTICES TO MARINERS



EDITION NO. 03 DATED 01 FEB 2022

(CONTAINS NOTICES 045 TO 051)

REACH US 24 x 7



msis-inho@navy.gov.in
inoh@navy.gov.in



+91-135-2748373



National Hydrographic Office
107-A, Rajpur Road
Dehradun – 248001
INDIA



Commander (H)
Maritime Safety Information Services
+91- 135 - 2746290-117

WWW
www.hydrobharat.gov.in

CONTENTS

<u>Section No.</u>	<u>Title</u>
I	List of Charts Affected
II	Permanent Notices
III	Temporary and Preliminary Notices
IV	Marine Information
V	NAVAREA VIII Warnings in force
VI	Corrections to Sailing Directions
VII	Corrections to List of Lights
VIII	Corrections to List of Radio Signals
IX	Corrections to Miscellaneous Nautical Publications
X	Reporting of Navigational Dangers

(PUBLISHED ON NHO WEBSITE ON 1ST & 16TH OF EVERY MONTH)

FEEDBACK: msis-inho@navy.gov.in



INSIST ON INDIAN CHARTS AND
PUBLICATIONS
Original, Authentic and Up-to-Date



© Govt. of India Copyright

No permission is required to make copies of these Notices. However, such copies are not to be commercially sold.

II

MARINER'S OBLIGATION AND A CHART MAKER'S PLEA

Observing changes at sea proactively and reporting them promptly to the concerned charting agency, is an obligation that all mariners owe to the entire maritime community towards SOLAS. Mariners are requested to notify the Chief Hydrographer to the Government of India at the above mentioned address/fax number/ E mail address immediately on discovering new or suspected dangers to navigation, changes/ defects pertaining to navigational aids, and shortcomings in Indian charts/ publications. The Hydrographic Note [Form IH – 102] is a convenient form to notify such changes. Specimen form is attached at Section IX with this notice. Also visit our website for downloading and filling up instructions for Hydrographic Note.

**Chief Hydrographer
to the Government of India**

WARNING AGAINST USE OF COUNTERFEIT PRODUCTS

All mariners are cautioned against the use of counterfeit copies of IN Charts and publications. Navigational Charts produced after 31 Oct 14 carry NHO crest as watermark on the reverse with backslip. Chart Agent's stamp is mandatory on all Charts.

Counterfeit products may have errors resulting in potential risks. The same are not approved by inspecting agencies and do not satisfy the carriage requirements of SOLAS chapter V.

Mariners are strongly advised not to use or encourage the use of counterfeit charts and publications. Failure to comply with the warning may invite legal action.

III

EXPLANATORY NOTES

Corrections to Charts and Publications. Section I comprises List of Charts affected by the notices contained in this edition. Whereas sections II and III contain information for correcting the charts and publications. Mariners should insist on corrected charts from their chart distributors/agents.

- (a) Geographical positions given are in the horizontal datum of the current edition of the chart, unless otherwise stated.
- (b) Bearings are true, reckoned clockwise from 000° to 359°. Bearings to lights are from seaward.
- (c) Symbols referred to, are those shown on the chart 5020 (INT 1).
- (d) Alterations to depth contours, deletion of depths to make way for new detail, etc; are not normally mentioned, unless they have some navigational significance.
- (e) Blocks and notes, if any, accompanying the Notices in Sections II and III are placed after Section IX.

Temporary and Preliminary Notices. These are indicated by (T) and (P) respectively after the Notice number and are placed in Section III. SI Nos. of those in force are published quarterly on 01 Jan, 01 Apr, 01 Jul and 01 Oct, and their text is published in Annual Edition of Indian Notices to Mariners. They should be inserted in pencil, by the user, on receipt.

Source of Information. A star preceding the number of a Notice indicates that the notice is promulgated by INHO based on original information received.

Sailing Directions. Corrections for the Sailing Directions (Pilots) are given in Section VI.

Lights. Corrections to Indian List of Lights are given in Section VII, where affected Light List number is quoted.

- (a) These corrections should be incorporated as per instructions given on page XI of the List of Lights.
- (b) Such correction notices to list of lights may be published in either an earlier or a later Edition of N to M than the Edition containing the Notice to the chart correction.
- (c) The range of a light given is its nominal range. Its geographical range is given in parenthesis only if it is less than the nominal range.
- (d) A star indicates that the corresponding field is to be amended and all stars indicate that new light is to be inserted.

Radio Signals. The corrections in Section VIII should be cut and pasted in the appropriate volume of the List of Radio Signals.

Radio Navigational Warnings.

- (a) These are broadcast as serially numbered NAVAREA warnings by the concerned NAVAREA coordinator through GMDSS and Area Radio Broadcasts.
- (b) They contain important information affecting navigational safety, which cannot await the publication of the next edition of N to M.
- (c) It should be borne in mind that they may be based on reports which cannot always be verified before promulgation.
- (d) It is therefore necessary to be selective, and promulgate only the more important warnings to avoid over loading users; the less important information is included in the forthcoming edition of N to M or the Chart/Publication concerned.

IV

Laws and Regulations. While in the interest of the safety of shipping, the Hydrographic Office makes every endeavor to include in its publications details of the laws and regulations of all countries pertaining to navigation, it must be clearly understood: -

- (a) That no liability whatsoever can be accepted for failure to publish details of any particular law or regulation and
- (b) That publication of details of a law or regulation is solely for the safety and convenience of shipping and implies no recognition of the International validity of the law or regulation.

Correction of Charts and Publications by the Users. Notices to Mariners contain important information concerning safety of navigation at sea, hence, they should be used to keep the specified charts and publications up-to-date.

Reliance on Charts and Associated Publications. While every effort is made by the Hydrographic Office to ensure the accuracy of the information on Charts and Publications before they are published, it should be appreciated that it may not always be complete and up-to-date. The mariner must be the final judge for the reliance he can place on the information available, bearing in mind his particular circumstances, local pilotage guidance and judicious use of available navigational aids.

Use of Global Positioning System (WGS 84) positions.

- (a) The positions of hydrographic objects shown on some of the Indian charts and publications are in Everest datum. However, the positions of vessels obtained from Global Positioning System (GPS) are on World Geodetic System 1984 datum. There will always exist difference in the position values obtained by visual fixing (Everest Datum) and GPS position (WGS 84 datum).
- (b) Wherever these differences have been ascertained, their average values are published as a Cautionary Note on the chart concerned, as shifts in Latitude and Longitude. Whilst plotting GPS positions on charts, the shift values as given on the chart must be applied, before making any assessment of the navigational situation vis-à-vis the other charted information.
- (c) These datum shift values are not uniform, particularly in areas off Andaman and Nicobar and Lakshadweep Islands, as these places are not linked to mainland network (Everest datum). Mariners are advised to use alternate source of position information such as Visual or Radar, particularly when closing the shore or navigating in the vicinity of dangers.

Source Data on Charts. All Indian charts contain specific information on their source of hydrographic data. In areas where the source data is very old, incomplete and less reliable, the mariner must use such charts with prudence. Mariner should always use the largest scale charts available for the area. Apart from being the most detailed, the larger scale charts are usually corrected first. Hydrographic information may be sparse on small scale charts. On such charts, a charted shoal may be in error as regards position, least depth and extent. Uncharted dangers may also exist, particularly in areas away from well-established routes. Mariners must exercise due caution.

Further Guidance. The Mariner's Hand Book (NP 100) gives full explanation on the use of charts and the type of information contained on charts. In their own interest, all users of charts should refer to it.

NEWLY PUBLISHED INDIAN CHARTS, ENC_s AND PUBLICATION

1. The new Indian Chart that is available for mariners in the market is as follows:-

<i>Chart No.</i>	<i>Date of Publication</i>	<i>Title, Limits & Description</i>	<i>Scale</i>	<i>Folio</i>	<i>Price</i>
3005	15-12-2021	MACHILIPATNAM ANCHORAGE LIMIT 16° 05'.75N; 81° 08'.60E. 16° 14'.83N; 81° 21'.30E.	35,000	5	Rs. 1950.00

2. The new edition Indian Chart that is available for mariners in the market is as follows:-

<i>Chart No.</i>	<i>Date of Publication</i>	<i>Title, Limits & Description</i>	<i>Scale</i>	<i>Folio</i>	<i>Price</i>
208	31-12-2021	GULF OF KHAMBHAT LIMIT 21° 02'.50N; 71° 57'.00E. 22° 20'.00N; 72° 50'.00E.	1,50,000	2	Rs. 1950.00

3. The Indian Charts that are permanently withdrawn are as follows:-

<i>Chart No.</i>	<i>Date of Publication</i>	<i>Title</i>	<i>On Publication of New Chart/ Edition</i>	<i>Date of Publication</i>
208	31-07-2006	GULF OF KHAMBHAT	208	31-12-2021
3005	15-06-2015	MACHILIPATNAM ANCHORAGE	3005	15-12-2021

4. The new Indian Electronic Navigational Charts that are available for mariners in the market are as follows:-

<i>ENC Cell Name</i>	<i>Chart No.</i>	<i>Title</i>	<i>Issue Date</i>
IN3208AA	208	GULF OF KHAMBHAT	27-01-2022
IN53005C	3005	MACHILIPATNAM ANCHORAGE	27-01-2022

5. The new edition Indian Electronic Navigational Charts that are available for mariners in the market are as follows:-

<i>ENC Cell Name</i>	<i>Chart No.</i>	<i>Title</i>	<i>Issue Date</i>
IN62034P	2034	HAZIRA PORT	27-01-2022
IN42044H	2044	GULF OF KHABHAT SOUTHERN PORTION	27-01-2022
IN52101A	2101	APPROACHES TO HAZIRA	27-01-2022
IN62108E	2108	ESSAR BULK TERMINAL	27-01-2022

VI

6. The Indian Electronic Navigational Charts that are permanently withdrawn are as follows:-

<i>ENC Cell Name</i>	<i>Chart No.</i>	<i>Title</i>	<i>Issue Date</i>
IN62034P	2034	HAZIRA PORT	25-10-2017
IN42044H	2044	GULF OF KHABHAT SOUTHERN PORTION	07-07-2021
IN52101A	2101	APPROACHES TO HAZIRA	21-10-2020
IN62108E	2108	ESSAR BULK TERMINAL	26-10-2020
IN3208KH	208	GULF OF KHAMBHAT (CAMBAY)	11-02-2019
IN53005A	3005	MACHILIPATNAM ANCHORAGE	13-07-2015

7. The forthcoming Indian Charts are as follows:-

<i>Chart No</i>	<i>Title</i>	<i>Scale</i>	<i>Remarks</i>
273	KADMAT I. TO IHAVANDIFFULU ATOLL	5,00,000	New Edition
354	SACRAMENTO SHOAL TO KALINGAPATNAM	3,00,000	New Edition
2010	KARWAR TO NAVAL HARBOUR	12,500	New Edition
2507	GRAND PORT	12,500	New Edition
2530	APPROACHES TO GRAND PORT	30,000	New Edition
2695	WESTERN APP. TO PEMBA ISLAND	50,000	New Chart
4206	APPROACHES TO PULOMILLOW	25,000	New Chart
	PULOMILLOW ANCHORAGE	50,000	New Chart
4207	S. GEORGES CHANNEL	50,000	New Chart
4252	DILIGENT STRAIT TO KOTRARA ANCHORAGE	60,000	New Chart

Availability of ENCs

The complete folios of Official Indian ENCs are distributed worldwide through JEPPESEN MARINE (formerly C-MAP), UKHO and Norwegian Hydrographic Service. UKHO distributes Indian ENCs through the worldwide network of their agents and distributors. Updates are also made available as per the existing policy of the distributor. Mariners and other ENC users may contact the under mentioned for further details:

United Kingdom Hydrographic Office Admiralty Way, Taunton, Somerset TA1 2DN, UK Tel : +44 (0) 1823 337900 Fax : +44 (0) 1823 330561, 1823 284077 Web site : www.hydro.gov.uk	M/s IIC Technologies Limited B-2-350/5/B-22, Road No. 3 Banjara Hills, Hyderabad - 500 034 Telangana Tel: +91 4039144444 Fax: +91 4039144455 Email: somnath.marthi@iictechnologies.com Web: www.iictechnologies.com
M/s Primar Norwegian Hydrographic Service, Postbox 60, 4001 Stavanger Norway Telephone - +47 - 51 85 87 00 Fax - + 47 - 51 85 87 08 E-mail: data@ecc.no Website: - www.primar.org	

SECTION – I

The list of charts affected by the Notices 045 to 051 contained in this edition is as follows:-

CHART NUMBER	FOLIO NO.	NOTICE NO.
21	2	051 (T)
22 (INT 752)	3	046
31 (INT 756)	5	051 (T)
32 (INT 754)	5	051 (T)
33 (INT 755)	5	051 (T)
41 (INT 757)	6	050(T)
202	2	048 (T)
210	3	048 (T)
211	3	048 (T)
212	3	046
251 (INT 7318)	2	048 (T)
253 (INT 7328)	2	048 (T)
254 (INT7331)	3	048 (T)
255 (INT 7334)	3	048 (T)
256 (INT 7340)	3	046, 048 (T)
271	2	048 (T)
291	2	051 (T)
292 (INT 7021)	2	048 (T)
293 (INT 7022)	3	046, 048 (T)
315	5	051 (T)
316	5	051 (T)
354 (INT 7408)	5	049 (T)
355 (INT 7405)	5	047, 049 (T)
358 (INT 7394)	5	051 (T)
391	5	049 (T)
2011	3	046
2034	2	045
2044	2	045
2101 (INT 7347)	3	045
2105	3	046
2108	3	045
3042	5	049 (T)
7071 (INT 71)	1	051 (T)
7073 (INT 73)	1	051 (T)
7702 (INT 702)	1	051 (T)
7703 (INT 703)	1	051 (T)
7706 (INT 706)	1	051 (T)
7707 (INT 707)	1	051 (T)

SECTION – II**PERMANENT NOTICES*****045 (03/22) INDIA – WEST COAST – Hazira Port – Accompanying Block.**

Source: NHO, Dehradun.

Chart 2044 [previous update 157/21]

Insert accompanying block, centered on;

21° 05′.18N., 72° 37′.40E.

Chart 2101 (INT 7347) [previous update 161/21]

Insert accompanying block, centered on;

21° 05′.39N., 72° 38′.15E.

Chart 2108 [previous update 206/20]

Insert accompanying block, centered on;

21° 04′.94N., 72° 37′.87E.

Chart 2034 [previous update 143/21]

Insert accompanying block, centered on;

21° 05′.08N., 72° 37′.67E.

***046 (03/22) INDIA – WEST COAST – Jaigarh and Angre Ports – Wreck.**

Source: IH - 102, INS Makar

Chart 22 (INT 752) [previous update 032/22]

Insert



17° 19′.39N., 73° 11′.14E.

Chart 293 (INT 7022) [previous update NE 31 Jan 21]

Insert



17° 19′.39N., 73° 11′.14E.

Chart 256 (INT 7340) [previous update 072/20]

Insert



17° 19′.39N., 73° 11′.14E.

Chart 212 [previous update 207/20]

Insert



17° 19′.39N., 73° 11′.14E.

Chart 2011 [previous update 216/20]

Insert



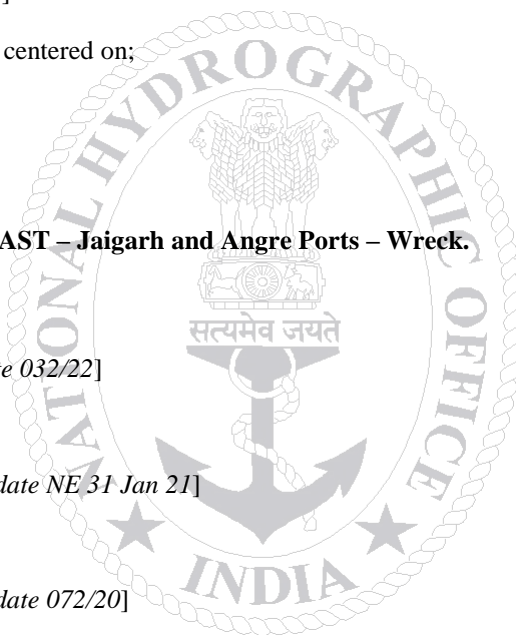
17° 19′.39N., 73° 11′.14E.

Chart 2105 [previous update 216/20]

Insert



17° 19′.39N., 73° 11′.14E.



*047 (03/22)		Miscellaneous updates to charts.
Source: NHO, Dehradun.		
Chart No.	Previous Updates	Details
355	<i>092/21</i>	Insert Chart No. 3005 and Magenta limit as follows: 16° 05′.75N., 81° 08′.60E. 16° 05′.75N., 81° 21′.30E. 16° 14′.83N., 81° 21′.30E. 16° 14′.83N., 81° 08′.60E. 16° 05′.75N., 81° 08′.60E.
		Delete Chart No. 3005 and Magenta limit as follows: 16° 05′.00N., 81° 08′.36E. 16° 05′.00N., 81° 21′.30E. 16° 14′.83N., 81° 21′.30E. 16° 14′.83N., 81° 08′.36E. 16° 05′.00N., 81° 08′.36E.



Section – III**TEMPORARY AND PRELIMINARY NOTICES*****048 (T) (03/22) INDIA – WEST COAST – Arabian Sea – Oil Rigs.**

Source: NCD, Mumbai.

1. List of Oil Rigs is as follows:-

Rig Name	Position
Aban III	19° 24'.65N., 71° 13'.07E.
Aban IV	19° 25'.26N., 71° 16'.84E.
CE Thornton	18° 32'.97N., 72° 18'.52E.
Compact Driller	21° 01'.91N., 72° 33'.25E.
Discovery 1	18° 36'.10N., 71° 01'.60E.
DS Fossil	18° 43'.09N., 72° 19'.12E.
FG MC Clintok	18° 18'.63N., 72° 21'.81E
Foresight Driller IX	19° 10'.61N., 70° 57'.65E.
Great Drill Chaaru	18° 46'.02N., 72° 17'.96E.
Great Drill Chetna	20° 29'.65N., 71° 39'.68E.
Great Drill Chaaya	20° 22'.30N., 72° 12'.80E.
Great Drill Chitra	19° 31'.73N., 71° 18'.26E.
Jindal Star	18° 01'.05N., 72° 22'.72E.
Jindal Supreme	19° 37'.97N., 71° 41'.39E
JT Angel	19° 22'.04N., 71° 19'.47E
Parameswara	19° 18'.60N., 71° 26'.25E
Ron Tappmeyer	20° 08'.68N., 71° 44'.93E.
Sagar Jyoti	19° 43'.76N., 71° 31'.80E.
Sagar Kiran	19° 00'.71N., 71° 23'.46E.
Sagar Ratna	20° 06'.42N., 72° 15'.79E.
Sagar Shakti	20° 10'.65N., 72° 12'.43E.
Sagar Udhay	20° 12'.85N., 71° 55'.22E.
Trident 2	20° 22'.14N., 72° 12'.64E.
Trident 12	18° 45'.23N., 72° 18'.00E.
Valiant Driller	19° 34'.71N., 71° 23'.15E.
Vivekananda 1	19° 11'.99N., 72° 11'.00E.
Vivekananda 2	18° 33'.77N., 72° 18'.30E.
Virtue 1	19° 26'.15N., 71° 18'.63E.
Victory Driller	18° 08'.49N., 72° 22'.07E.

2. All vessels operating in vicinity are to maintain a clearance of 01 NM off the oil rigs.

3. All positions referred to WGS 84 datum

Charts Affected – 292 (INT 7021) – 293 (INT 7022) – 271 – 251 (INT 7318) – 253 (INT 7328) – 254 (INT 7331) – 255 (INT 7334) – 256 (INT 7340) – 210 – 211 – 202.***Former INTM 040 (T)/22 is cancelled.***

***049 (T) (03/22) INDIA – EAST COAST – Bay of Bengal – Oil Rigs.**

Source: NCD, Mumbai.

1. List of Oil Rigs is as follows:-

Rig Name	Position
Aban II	16° 23'·02N., 81° 58'·71E.
DDKG 1	16° 10'·40N., 82° 39'·10E.
DS Fortune	16° 22'·49N., 81° 58'·58E.
SSV Louisiana	16° 20'·12N., 82° 21'·64E.
Platinum Explorer	16° 25'·13N., 82° 23'·76E.

2. All vessels operating in vicinity are to maintain a clearance of 01 NM off the oil rigs.

3. All positions referred to WGS 84 datum.

Charts Affected – 391 – 354 (INT 7408) – 355 (INT 7405) – 3042.**Former INTM 041 (T)/22 is cancelled.*****050 (T) (03/22) BAY OF BENGAL AND ANDAMAN SEA – ANDAMAN SEA – Geophysical Site Investigation.**

Source: Myanmar Notice 02/2022.

1. Geophysical Site Investigation (GSI) carried out by Survey Vessel “MV-PTSC RESEARCHER” (Call Sign: 3WJZ) till 25 May 2022 in the following coordinates:-

(A) BLOCK (M-9E/A)		
Sl No.	Point	Position
1.	GTK-42C	14° 26'·33N., 95° 35'·49E.
2.	KKN-71A	14° 19'·68N., 95° 39'·10E.
3.	ZTK-27/A	14° 04'·81N., 95° 50'·81E.
4.	GTK-41	14° 34'·32N., 95° 44'·21E.
5.	GTK-41G/D	14° 39'·43N., 95° 52'·36E.
6.	ZTK-29/A/B	14° 06'·14N., 95° 46'·85E.
7.	GTK-42A/43	14° 29'·81N., 95° 41'·39E.
8.	KKN-56CL	14° 16'·91N., 95° 58'·72E.
9.	GTK-10C	14° 37'·23N., 96° 06'·13E.
10.	KKN-70B/C	14° 21'·38N., 95° 47'·76E.
11.	SPA-1-UP Dip	14° 29'·27N., 96° 06'·17E.
12.	KKN-39B	14° 20'·93N., 95° 51'·71E.
13.	KKB-55CL	14° 17'·88N., 95° 56'·75E.
14.	ZTK-17/C	14° 02'·05N., 95° 57'·56E.
15.	ZTK-32	14° 11'·55N., 95° 51'·81E.
16.	GTK-14A/14B	14° 33'·74N., 96° 06'·75E.
17.	GTK-37/39	14° 29'·89N., 95° 54'·96E.
(B) BLOCK (M-9WHP)		
1.	ZWP-19	14° 15'·29N., 95° 56'·60E.
(C) BLOCK (M-3E/A)		
1.	ASK-12	15° 25'·98N., 95° 30'·01E.
(D) BLOCK (M-9 Pipeline Route)		
1.	ZWP-16	14° 15'·34N., 95° 33'·46E.
2.	ZWP-17	14° 31'·08N., 96° 00'·66E.
3.	ZWP-18	13° 57'·00N., 95° 46'·09E.
4.	ZWP-19	14° 15'·29N., 95° 56'·60E.

2. During the operation period, anchoring, fishing and trawling are prohibited within 4 Km and the vessels are advised to keep proper clearance from above mentioned area.

3. Mariners are advised to navigate with caution in the area and contact Port authority for latest information.

Charts Affected – 41 (INT 757).

***051 (T) (03/22) INDIAN OCEAN - NORTHERN PART - RAMA Buoys.**

Source: NOAA.

1. Following research moored array of African - Asian - Australian Monsoon analysis and prediction (RAMA) buoys laid in following positions:-

Buoy No./Name	Position
RA185A	15° 01'.30N., 089° 02'.60E
RA184A	00° 00'.00N., 089° 57'.60E
RA176A	00° 59'.00S., 100° 23'.00E
RA175A	01° 32'.90S., 080° 34'.00E
RA183A	07° 56'.30N., 067° 06'.40E
RA182A	04° 14'.20N., 066° 41'.00E
RA181A	08° 07'.70S., 110° 32'.90E
RA180A	00° 25'.40N., 067° 00'.30E
RA179A	01° 34'.80S., 066° 48'.10E
RA177A	04° 06'.70S., 057° 11'.00E
RA178A	09° 28'.30S., 051° 06'.80E
RT033	09° 46'.60N., 080° 16'.60E
RT030	00° 47'.80S., 083° 06'.70E
RT029	12° 34'.90S., 068° 50'.60E
RT028	11° 50'.20S., 080° 19'.60E
RT031	05° 09'.80S., 101° 37'.10E
RT036	08° 05'.50S., 067° 00'.80E
RT035	12° 11'.60S., 067° 14'.70E
RT032	25° 06'.80N., 062° 20'.00E

2. All vessels operating in vicinity are to maintain a clearance of 01 NM off the moored buoys.

3. All positions are in WGS 84 datum.

Charts Affected - 21 - 31 (INT 756) - 32 (INT 754) - 33 (INT 755) - 291 - 315 - 316- 358 (INT 7394) - 7071 (INT 71) - 7073 (INT 73) - 7702 (INT 702) - 7703 (INT 703) - 7706 (INT 706) - 7707 (INT 707).

4. *Former INTM 043(T)/22 is cancelled.*



SECTION – IV

MARINE INFORMATION

1. **NAVTEX TRANSMISSION**

Status of MSI Promulgation by NAVTEX Stations is as follows:-

Mauritius (Cassis)	- Operational
Seychelles (Mahe)	- Operational
Myanmar (Yangon, Myeik, Kyau Phyu)	- Operational

Following new NAVTEX stations along the Indian coast have commenced operations:-

INTERNATIONAL NATIONAL NAVTEX FREQUENCY - 518 kHz								
Sl.	Station Name	B1	Broad Cast Timings in UTC					
			0110	0510	0910	1310	1710	2110
(a)	Veraval	H	0110	0510	0910	1310	1710	2110
(b)	Vengurla Point	J	0130	0530	0930	1330	1730	2130
(c)	Muttam Point	L	0150	0550	0950	1350	1750	2150
(d)	Porto Novo	O	0220	0620	1020	1420	1820	2220
(e)	Vakalpudi	Q	0240	0640	1040	1440	1840	2240
(f)	Balasore	S	0300	0700	1100	1500	1900	2300
(g)	Keating Point	V	0330	0730	1130	1530	1930	2330

2. **MISIDENTIFYING FISHING BOATS AS PIRATE SKIFFS**

All merchant vessels entering Indian EEZ are advised that dense fishing activity may be encountered off West Coast of India. Fishing is generally carried out by mechanized boats and single hull boats with outboard motors carrying 4-5 crews using long lines upto 50 NM from coast. The vessels traversing the nets are likely to be approached by fishing boats for safeguarding nets and lines and should not be mistaken as skiffs and PAG's. Masters of vessels to report any suspicious activity of fishing vessels immediately to MRCC (Mumbai) on telephone +91-22-24388065, 24316558, Email: - mrc-west@indiancoastguard.nic.in. Any suspicious activity of skiffs/ boats to be photographed if possible. Merchant vessels with armed guards on board are to report presence of guards to Indian Navy/Coast Guard while transiting Indian EEZ.

3. **DISPLAY ANOMALIES IN ECDIS**

(a) Mariners are advised that the International Hydrographic Organization (IHO) check data set shows that some ECDIS systems fail to display some significant underwater features in the standard display mode. The use of this check data set, issued through ENC service providers and available from the IHO website www.iho.int, to check the operation of ECDIS is strongly recommended. JRC has confirmed that certain versions of JRC ECDIS fail to display some types of wreck and obstructions, including stranded wrecks, in any display mode. Where JRC ECDIS is in use, paper charts should be the primary means of navigation until the ECDIS has been proved to operate correctly. See www.jrc.co.jp/eng/product/marine/whatsnew/20120313/index.html for further information.

(b) Some Electronic Chart Display and Information Systems (ECDIS) may exhibit operating anomalies. The International Maritime Organization's (IMO) circular SN.1/CIRC.312 pages /imodocs.aspx (registration required) lists identified anomalies, Their characteristics and remedial advice. Mariners are reminded that they should access the International Hydrographic Organization (IHO) data presentation and performance check (DPPC) dataset (news links of <http://www.iho.int/srv1>) and ensure that all installed ECDIS units are checked.

4. **SAFETY FAIRWAYS, RECOMMENDED ROUTES, TRAFFIC SEPARATION SCHEME**

The Director General Shipping has established Safety fairways, recommended routes and traffic separation scheme (TSS) in restricted Indian waters including the offshore development area to enhance safety of navigation. The details of coordinates are published in the fortnightly Indian Notices to Mariners.

(a) **Safety Fairways:** An area within which permits are not granted for the erection of oil or gas related structures. The use of a safety fairway is not usually mandatory, but is recommended. Safety fairways have been promulgated in and round offshore development area in Arabian Sea up to the Exclusive Economic Zone (EEZ) due to increased weather related marine accidents and dense traffic. These are mandatory for all Indian ships and vessels transiting through the ODA and recommendatory for all foreign flag ships and vessels irrespective of size.

(b) **Traffic Separation Schemes (TSS):** The TSS is mandatory for all Indian and foreign flag ships and vessels entering and leaving.

5. **GAGAN SYSTEM COMMISSIONED FOR OPERATIONS**

The GAGAN System is now commissioned for safety of life, civil aviation, and en- route operations in addition to all other non-aviation applications. The GAGAN signal is being broadcasted through GSAT-8 and GSAT-10 with PRN127 & 128 respectively. All the GPS users are requested to enable SBAS functionality in their receivers, configure it to receive PRN- 127 & 128 and avail the benefits of GAGAN in terms of increased accuracy and reliability. There may be occasional signal outages due to system up-gradation activities.

6. **USAGE OF THURAYA/ IRIDIUM AND SATELLITE PHONE**

(a) The use of Thuraya, Iridium and other such satellite phone is banned in India under Sec 6 of Indian Wireless Act and Sec 20 of Indian Telegraph Act. It is intimated to all shipping companies/ shipping agents that use of Thuraya/ Iridium and other such satellite phones are banned in Indian waters and seafarers should not use the same.

(b) Satellite phones can be used only after no objections certificate issued by department of telecommunication (DOT) on a case to case basis. The shipping agents should mandatorily intimate the details of person carrying Thuraya and the particulars of Thuraya, Iridium and other such sets in Pre Arrival Notification on Security (PANS).

(c) The unauthorized holders of Thuraya/ Iridium and other such Satellite phones can be prosecuted under Sec 6 of Indian Wireless Act and Sec 20 of Indian Telegraph Act.

7. **CAUTIONARY NOTE**

There is a finite amount of lag between publication of large and small scale Indian Nautical Charts. To avoid uncertainty the mariners are advised to use large scale charts for coastal navigation wherever applicable and available. In addition, mariners are to refer large scale charts in conjunction with small scale charts in areas where both overlap during both planning and conduct of passage.

8. **ADVISORY FOR ALL VESSELS NAVIGATING INDIAN WATERS**

(a) All vessels navigating in Indian waters are cautioned to keep a sharp look-out for fishing vessels and small crafts, as there have been several incidents of collisions with such vessels in the past resulting in loss of innocent lives as well as damage to property.

(b) It is further cautioned that all vessels need to exercise extreme care while navigating during hours of darkness as such vessels are generally of primitive built (wood/fibre/etc) due to which it may not be detected on ship's radar, especially during adverse weather conditions. Also, such vessels may not be properly lit, or sometimes, only one vessel may be lit among multiple vessels in a cluster.

(c) The general areas of concern on the west coast of India are the areas of convergence and divergence of traffic, mainly between Mangalore to Kanyakumari (Cape Comorin). Further, in these areas, additional caution needs to be exercised and wide berth be given to all such vessels.

(d) All fishing vessels are also cautioned to avoid fishing in areas having high density traffic. All fishing vessels are also required to always maintain proper lookout by sight, hearing and by all available means and comply with all applicable provisions of Collision Regulations.

List of Indian Chart Agents

<p>OSA Books and Periodicals R-246, Greater Kailash –I, New Delhi - 110 048 Tel/Fax: +91-11-26418643, 46557337, Mob: 9971093992 Email: rpani246@gmail.com</p>	<p>M/s VDO Marine Instruments Shanghar Building, PO Bag No – 645, 45/271, Corner of Bristow & Naval Road, Willingdon Island, Kochi – 682 003 Tel: +91 484 2667157 Fax: +91 484 2667121 Email: atmain@md4.vsnl.net.in</p>
<p>M/s Global Charts & Nav. Aids Pvt. Limited 1A, Goa Mansion, Ground Floor, 58, Dr. Sunderlal Bahl Path (Goa Street), Fort, Mumbai - 400 001 Tel: 91-22-22626318, 22626380 Fax: 91-22-22621488 Email: sales@globalcharts.in Web: www.globalcharts.com.sg</p>	<p>SMS Marine Private Ltd 505, Raheja Arcade, Sector 11, CBD Belapur, Navi Mumbai – 400 614 Tel: +91-22-62233326, Fax: 022-67939504 Mobile: +91 9820 238 542 Email: info@c-map.co.in , raj.chakravorty@smsmap.com Web: www.smsmaps.co.in</p>
<p>M/s C & C Marine Combine 25 Bank Street, 1st Floor, Fort Mumbai - 400 023 Tel: 91-22- 22660017/0018/0525/1937 Ext: 32 Tel: 91-22-22672143 Fax: 91-22-22670896 Email: vijay@ccmarine.in, sales@ccmarine.in</p>	<p>M/s Global Marine Infratech Pvt. Ltd. SikshaSandan, Ground Floor, Plot No. ND7, VIP Area, IRC Village, Bhubaneswar – 751015 Tel: +91-674-2550599, Fax: +91-674-2551899 Cell: - +91-9337477799, 7077702499 Email: tusarkantha@gmiindia.in Web: www.gmiindia.in</p>
<p>M/s JM Maritime Services 24/24C Kavarana Building, Ground Floor, WadiBunder, P.D. Mellow Road, Mumbai – 400 009 Tel: +91 22 23736956, Fax: 022 - 23725083 Cell: +91 9820788357 Email : jmms@mtnl.net.in , charts@mtnl.net.in</p>	<p>L. R. Marine Services 301, 3rd Floor, Biryra House, 265, Perin Nariman Street, Fort, Mumbai - 400 001. Tel: +91-22-2269 1535, Fax: +91-22-66359148 Cell No: +91 8108926880/ +91 98214 60258 Email: lrcharts@gmail.com, lrmarine@live.com</p>
<p>M/s Lift o Marine Allen's Mansion, C6, Nungi Station Road, Bata Nagar, Kolkata – 700 140 Tel: +91 9836972027 Fax: 033 24924283 Email: sankar@liftmarine.org, liftmarine77@gmail.com Web: www.liftmarine.org</p>	<p>IIC Technologies Limited 8-2-350/5/B-22, Road No. 3, Banjara Hills, Hyderabad – 500 034, Telangana Tel: +91 40 39144444 Fax: +91 40 39144455 Email: somnath.marthi@iictechnologies.com Web: www.iictechnologies.com</p>
<p>M/s Zenith Surveys (I) Pvt. Ltd. Lakhani's Plam View, First Floor, Office No. 889, Sector 48, Nerul, Navi Mumbai – 400 706 Tel/ Fax: +91-22- 27708011 Email: zenithsurveys703@gmail.com nyvmane@yahoo.com Web: www.zenithsurvey.com</p>	<p>M/s CNC Office No. S-12-92, Haware's Centurion Premises Coop. Soc. Ltd Plot no 88-91, Sector 19, NERUL, Navi Mumbai – 400706 Tel: +91 22 22660017/ +91 22 49747575 Cell No: +91 9920654848/ +91 7506097212 Email: sales@emariner.net</p>

SECTION – V**NAVAREA – VIII WARNINGS IN FORCE**

1. For details of NAVAREA limits and organisation/ coordination, please refer to Notice No. 12 of the Special edition of Indian Notice to Mariners – 2020.

2. NAVAREA VIII Warnings in force as on 31 Jan 22: -

2020 SERIES - 333 442 630 690 751 757
2021 SERIES - 017 147 286 340 387 392 420 447 463 478 479 480 491 493 540 544 550 601 604 629 633 644 658 688 690 701 728 756 759 761 771 772 775 795 800 805 833 843 846 880 883 903
2022 SERIES - 024 043 044 045 049 055 056 058 059 061 062 063 064 065 066 067 068 069 071 072 073

3. NAVAREA VIII Warnings issued during the period from 16 Jan 22 to 31 Jan 22 (both dates inclusive) are as tabulated below: –

<p>039. India East Coast - off Balasore. Charts IN 31 351 352 3017 3038 7706 INT 756. Experimental flight trial scheduled on 19, 20, 21 Jan 22 from 0430 to 0630 UTC and 0830 to 1030 UTC in danger area bounded by 21-22.33N 086-55.6E, 21-11.42N 086-53.12E, 20-45.82N 087-07.53E, 20-28.78N 086-58.97E, 15-40.87N 089-25.27E, 14-58.85N 090-03.75E, 15-07.85N 090-24.48E, 16-02.47N 090-11.22E, 20-49.63N 087-39.43E, 20-55.42N 087-23.72E, 21-18.3N 087-07.53E, 21-22.82N 086-56.63E. Wide berth from area advised.</p> <p>2. Cancel this MSG 211130 UTC Jan 22.</p>
<p>040. Bay of Bengal - off Andaman i. Charts IN 33 7706 INT 755. Firing by CG Aircraft scheduled on 19, 20 Jan 22 from 0230 to 0730 UTC in danger area bounded within 11-50N to 12-00N and 090-30E to 091-00E. Wide berth from area advised.</p> <p>2. Cancel this MSG 200830 UTC Jan 22.</p>
<p>041. India West Coast - off Kochi. Charts in 22 268 273 INT 752. Albatross 5 progressing cable survey along (a) 10-49.05N 073-41.68E, 11-07.5N 072-43.14E from 18 to 20 Jan 22 (b) 11-07.5N 072-43.14E, 11-13.69N 072-46.66E from 21 to 23 Jan 22 (c) 11-13.69N 072-46.66E, 11-28.94N 073-00.47E from 24 to 27 Jan 22 (d) 11-28.94N 073-00.47E, 11-41.74N 072-42.73E from 28 to 30 Jan 22. Length of tow 250 meters from stern. Wide berth requested.</p> <p>2. Cancel this MSG 301830 UTC Jan 22.</p>
<p>042. Cancel NAVAREA VIII MSG 905/21, 907/21, 007/22, 009/22, 012/22, 013/22, 022/22, 028/22, 029/22, 037/22 and this MSG. INTM 040(t), 041(t) of 02/22 refers.</p>
<p>043. India West Coast - Jafarabad. Charts IN 207 253 INT 7328. Lt (20-51.45N 071-22.92E) will be switched off from 17 Jan 22.</p>
<p>044. India West Coast. Charts IN 21 255 292 INT 7334. Rig move. Parameswara (19-18.6N 071-26.25E). Refer to 040(T) of INTM 02/22. Wide berth requested.</p>
<p>045. India East Coast. Charts IN 31 355 391 INT 7405. Rig move. Platinum Explorer (16-25.13N 082-23.76E). Refer to 041(t) of INTM 02/22. Wide berth requested.</p>
<p>046. India West Coast - off Porbandar. Charts IN 21 204 252 292 INT 7325. Firing by CG Aircraft scheduled on 21, 26, 28 Jan 22 from 0130 to 0930 UTC in danger area bounded by 21-32N 069-24E, 21-12N 069-24E, 21-14N 069-05E, 21-32N 068-56E. Wide berth from area advised.</p> <p>2. Cancel this MSG 281030 UTC Jan 22.</p>
<p>047. Bay of Bengal - off Balasore. Charts IN 31 304 351 3017 3038 INT 756. Experimental flight trial scheduled on (a) 23 Jan 22 from 0330 to 0630 UTC (b) 24 Jan 22 from 0430 to 0630 UTC and 0830 to 1030 UTC (c) 25 Jan 22 from 0430 to 0630 UTC and 0830 to 0930 UTC in danger area bounded by 20-48.37N 087-02.58E, 19-26.77N 086-43.12E, 15-13.5N 085-01.33E, 15-38.65N 090-06.92E, 19-31.58N 087-41.53E, 20-48.77N 087-07.4E. Wide berth from area advised.</p> <p>2. Cancel this MSG 251030 UTC Jan 22.</p>
<p>048. India East Coast - Chennai. Charts IN 32 313 356 3001 INT 7402. Firing scheduled on 25 Jan 22 from 0830 to 0930 UTC in danger sector extending upto 11 NM between bearing 045 and 075 from 13-07.02N 080-18.01E. Wide berth from area advised.</p> <p>2. Cancel this MSG 251030 UTC Jan 22.</p>
<p>049. Andaman Sea - Yangon River. Charts BA 833 INT 7442. Buoys additional upper spit fl 3 10s (16-25.4N 096-21.25E), upper western fl r 02s (16-26.5N 096-20.35E), additional upper western fl r 03s (16-25.5N 096-20.65E), upper kings bank fl r (16-44.91N 096-11.62E), upper kings bank fl g 3s (16-45.07N 096-11.83E), lower kings bank fl g (16-44.4N 096-12.31E), liffy sand fl r 3s (16-43.61N 096-12.5E), liffy sand fl g 3s (16-43.7N 096-12.75E), upper kanaung creek fl r 3s (16-42.93N 096-12.7E), lower kanaung creek fl r (16-42.38N 096-13E), conical (16-43.604N 096-12.439E), lower kings bank fl r</p>

<p>049. Continued. (16-44.25N 096-12.05E), center western fl r 1s (16-24.6N 096-20.05E), center spit fl w 4s (16-24.65N 096-20.85E) laid. 2. Cancel NAVAREA VIII MSG 691/20.</p>
<p>050. Cancel NAVAREA VIII MSG 593/20, 606/21, 039/22 and this MSG.</p>
<p>051. India West Coast - off Daman. Charts IN 21 254 292 INT 7331. Firing by CG Aircraft scheduled on 27 Jan 22 from 0230 to 1130 UTC in danger area bounded within 20-26N to 20-40N and 072-27E to 072-40E. Wide berth from area advised 2. Cancel this MSG 271230 UTC Jan 22.</p>
<p>052. India East Coast - off Chennai. Charts IN 32 313 356 391 INT 7400. Firing by CG aircraft scheduled on 27, 28 Jan 22 from 0130 to 1130 UTC in danger area bounded within 12-49N to 12-59N and 080-46E to 081-26E. Wide berth from area advised. 2. Cancel this MSG 281230 UTC Jan 22.</p>
<p>053. Bay of Bengal - off Andaman i. Charts IN 33 7706 INT 755. Firing by cg aircraft scheduled on 27 Jan 22 from 0230 to 0730 UTC in danger area bounded within 11-50N to 12-00N and 090-30E to 091-00E. Wide berth from area advised. 2. Cancel this MSG 270830 UTC Jan 22.</p>
<p>054. India West Coast - Azhikod. Charts IN 220 259 2029 INT 7358. DGPS (10-12.2N 076-09.46E) transmission off.</p>
<p>055. India West Coast. Charts IN 21 255 292 INT 7334. Rig move. New Rig GD Chitra (19-31.73N 071-18.26E). Refer to 040(t) of INTM 02/22. Wide berth requested.</p>
<p>056. Andaman Sea - off Myanmar. Charts IN 41 BA 823 830 INT 757. MV-PTSC Researcher progressing geophysical investigation from 27 Jan to 25 May 22 in various locations within area bounded by 13-50N to 15-35N and 095-25E to 096-15E. Wide berth of 2.2 nm requested. 2. Cancel this MSG 251830 UTC May 22.</p>
<p>057. NAVAREA VIII - Warnings in force as on 21 Jan 2022:- 2020 Series - 333 442 630 690 751 757 2021 Series - 017 147 286 340 387 392 420 447 463 478 479 480 491 493 540 544 550 601 604 629 633 644 658 688 690 701 728 756 759 761 771 772 775 795 800 805 833 843 846 880 883 891 902 903 904 2022 Series - 003 024 030 041 043 044 045 046 047 048 049 051 052 053 054 055 056 (a) NAVAREA VIII Warnings less than 42 days promulgated via safety net. (b) Text of NAVAREA VIII Warning in force including those which no longer broadcast available in www.hydrobharat.gov.in 2. Cancel this MSG 281000 UTC Jan 22.</p>
<p>058. Bay of Bengal - off Andaman i. Charts IN 33 41 406 407 408 409 472 INT 755. Firing scheduled from 312200 UTC Jan to 021800 UTC Feb 22 in danger area bounded by 10-30N 091-30E, 10-30N 095-08E, 08-00N 095-35E, 06-40N 094-25E, 06-40N 091-30E. Wide berth from area advised. 2. Cancel this MSG 021900 UTC Feb 22.</p>
<p>059. India West Coast - off Kochi. Charts IN 22 268 273 INT 752. Albatross 5 progressing cable survey along (a) 11-41.74N 072-42.73E, 11-35.9N 072-11.14E from 31 Jan to 04 Feb (b) 11-35.9N 072-11.14E, 10-56.71N 072-17.29E from 05 to 08 Feb (c) 10-56.71N 072-17.29E, 10-51.8N 072-11.57E from 09 to 13 Feb (d) 10-51.8N 072-11.57E, 11-07.5N 072-43.14E from 14 to 16 Feb (e) 10-51.8N 072-11.57E, 10-33.63N 072-38.36E from 17 to 19 Feb (f) 10-33.63N 072-38.36E, 10-04.39N 073-38.57E from 20 to 22 Feb (g) 10-04.39N 073-38.57E, 08-16.82N 073-03.23E from 23 Feb to 05 Mar 22. Length of tow 250 meters from stern. Wide berth requested. 2. Cancel this MSG 051830 UTC Mar 22.</p>
<p>060. Cancel NAVAREA VIII MSG 054/22 and this MSG.</p>
<p>061. India East Coast - Portonovo. Charts IN 357 3025 INT 7397. NAVTEX (11-30.26N 079-46.26E) transmitter will be switched off from 240200 UTC Jan 22 for maintenance.</p>
<p>062. India West Coast - off Porbandar. Charts IN 21 204 252 271 292 INT 7325. IAF firing from Kathiawar range scheduled from 29 Jan to 11 Feb 22 from 0330 to 0530 UTC and 0830 to 1030 UTC in danger area bounded by 22-12N 068-36.33E, 21-15.5N 069-04E, 21-09N 069-40E, 21-15.5N 069-42.5E, 22-05.75N 068-49E. Wide berth from area advised. 2. Cancel this MSG 111130 UTC Feb 22.</p>
<p>063. India West Coast - off Mumbai. Charts IN 21 255 292 INT 7334. Seismic survey being progressed by Sanco star with node handling vessels Normand Tonjer & Olympic Taurus and support vessels in area bounded by 19-07.8N 071-32.5E, 19-31.7N 071-32.5E, 19-31.7N 072-09E, 19-11.2N 072-09E, 19-11.2N 071-57.1E, 19-07.8N 071-57E. Wide berth of 05 NM requested. 2. Cancel this MSG 241830 UTC Feb 22.</p>
<p>064. India West Coast. Charts IN 21 210 254 255 292 INT 7021. Rig move. Gd Chaaya (20-22.3N 072-12.8E), Discovery 1 (18-36.1N 071-01.6E). Refer to 040(t) of INTM 02/22. Wide berth requested.</p>
<p>065. India East Coast - off Gopalpur. Charts IN 31 305 352 353 391 INT 7413. Army air defence firing scheduled from 03 to 05 Feb, 07 to 12 Feb, 17 to 19 Feb, 24 to 26 Feb 22 from 0130 to 0830 UTC and 0930 to 1430 UTC in danger area bounded by (a) 19-14.6N 084-53.7E (b) 19-07.39N 085-35.94E (c) 18-33.61N 084-53.74E and arc of 41 nm radius joining</p>

<p>065. Continued. Point b and c. Wide berth from area advised. 2. Cancel this MSG 261530 UTC Feb 22.</p>
<p>066. Bay of Bengal - off Andaman i. Charts IN 33 41 473 7702 INT 755. Eagle Explorer progressing seismic survey in area bounded within 11-01.4N to 12-52.35N and 089-04.8E to 092-20.53E. Vessel towing streamer of 5.5 NM. Wide berth of 6.5 NM requested. 2. Cancel NAVAREA VIII MSG 904/21 and this MSG 311830 UTC Mar 22.</p>
<p>067. India West Coast - off Mumbai. Charts IN 21 211 255 292 INT 7334. Gs Rashi progressing pipeline survey in area bounded by 18-49.48N 072-17.44E, 18-48.88N 072-31.8E, 18-34.23N 072-28.63E, 18-34.44N 072-17.15E. Wide berth requested. 2. Cancel this MSG 071830 UTC Feb 22.</p>
<p>068. NAVAREA VIII - Warnings in force as on 28 Jan 2022:- 2020 Series - 333 442 630 690 751 757 2021 Series - 017 147 286 340 387 392 420 447 463 478 479 480 491 493 540 544 550 601 604 629 633 644 658 688 690 701 728 756 759 761 771 772 775 795 800 805 833 843 846 880 883 902 903 2022 Series - 003 024 030 041 043 044 045 049 055 056 058 059 061 062 063 064 065 066 067 (A) NAVAREA VIII Warnings less than 42 days promulgated via safetynet. (B) Text of NAVAREA VIII Warning inforce including those which no longer broadcast available in www.hydrobharat.gov.in 2. Cancel this MSG 041000 UTC Feb 22.</p>
<p>069. India East Coast - off Visakhapatnam. Charts IN 31 308 354 391 INT 7408. Subsurface firing scheduled on 31 Jan, 01 Feb 22 from 0800 to 0930 UTC in danger area bounded by 17-37.2N 083-18.1E, 17-38.3N 084-21.6E, 16-48.3N 084-20.9E, 16-46.6N 083-18.2E. Wide berth from area advised. 2. Cancel this MSG 011030 UTC Feb 22.</p>
<p>070. Indian Ocean - off Male. Charts IN 227 2597 7706 INT 706. Unmanned boat reported adrift in approximate position 04-42.94N 073-30.19E at 281415 UTC Jan 22. 2. Cancel this MSG 311415 UTC Jan 22.</p>
<p>071. India West Coast - Kochi. Charts IN 22 220 259 2004 2029 INT 7356. Firing scheduled on (A) 04, 11, 18, 25 Feb 22 from 0900 to 1200 UTC and 1230 to 1430 UTC (B) 07, 14, 21, 28 Feb 22 from 0900 to 1200 UTC in danger area bounded by 09-57.5N 075-59.5E, 09-57.7N 076-14.2E, 09-44N 076-17.5E, 09-43.65N 076-09.7E. Wide berth from area advised. 2. Cancel this MSG 281300 UTC Feb 22.</p>
<p>072. India West Coast - off Mumbai. Charts IN 21 211 255 292 INT 7334. Motor Tug Arshiya progressing survey in area bounded by 19-08.83N 072-48.51E, 19-05.31N 072-49.56E, 19-00.27N 072-41.97E, 19-03.08N 072-42.08E. Wide berth requested. 2. Cancel this MSG 281830 UTC Feb 22.</p>
<p>073. India East Coast - off Sagar I. Charts IN 31 301 351 INT 7419. Firing by CG Aircraft scheduled on 03, 07, 08, 10, 14, 15, 17, 21, 22, 24 and 28 Feb 22 from 0430 to 1030 UTC in danger area bounded within 20-37N to 20-52N and 088-30E to 089-00E. Wide berth from area advised. 2. Cancel this MSG 281130 UTC Feb 22.</p>

SECTION – VI
CORRECTIONS TO SAILING DIRECTIONS (PILOTS)

NIL

SECTION – VII
CORRECTIONS TO LIST OF LIGHTS

No	Name & Location	Position (Lat-Long)	Characteristics	Ht. (mts)	Range (miles)	Structure & Height (mts)	Remarks
D6370.2	- - Dir Lt 268°	34 47.91 S 20 03.42 E	Dir WRG	7	3	Red post	F G254°- 266° (12°). F W266°- 270° (4°). F R270°- 282°(12°) TE 2021 *
D7354.2	- Lee Breakwater. Head. No 2	25 22.01 N 55 22.24 E	Fl W 3s *	15	7	Red and white metal framework tower 12	..

SECTION – VIII
CORRECTION TO LIST OF RADIO SIGNALS

INP 31(1), 2019

(Last correction: Edition No. 24 dated 16 Dec 2021)

NIL

INP 31(2), 2019

(Last correction: Edition No. 01 dated 01 Jan 2022)

NIL

INP 31(5), 2017

(Last correction: Edition No. 24 dated 16 Dec 2021)

NIL

INP 31(6), 2018

(Last correction: Edition No. 23 dated 01 Dec 2021)

PAGE 98, KENYA, MOMBASA, Pilots and Ports, Procedure section.

Insert new section after para 3:

Likoni Floating Pedestrian Bridge (LFPB)

PROCEDURE:

- (1) **Departure vessels:** KPA operations in collaboration with the Ship's Agent shall issue 2h notice to the VTS before closure of the bridge.
- (2) **Arrival vessels:** Ship's Agent shall issue 3h notice of arrival to the VTS before closure of the bridge.
- (3) Vessel's shall confirm 2h notice of arrival to VTS Port Control through VHF before closure of the bridge.
- (4) The navigational channel remains closed to allow pedestrians to cross mainly during peak hours at the following times
 - (a) Morning crossing: 0600-0800 LT
 - (b) Evening crossing: 1630-1900 LT
 - (c) Unspecified crossing: Whenever the shipping schedule indicates that there will be no vessel movement for extended periods of time.

SECTION – IX

REPORTING OF NAVIGATIONAL DANGERS

Appeal to all Mariners

1. Mariners at sea whilst on passage, or whilst entering / leaving ports / Harbour and other waterways, are requested to look out for new or suspected dangers to navigation, changes in aids to navigation, or corrections to published charts and Sailing Directions. Whenever any such changes / dangers are observed, mariners are requested to notify the same to the Chief Hydrographer to the Government of India at the following address: -

National Hydrographic Office
 107-A, Rajpur Road,
 Dehradun - 248001
 (Uttarakhand), India
 e-mail : msis-inho@navy.gov.in, inho@navy.gov.in
 Fax No. : +91-135- 2748373
 Web : www.hydrobharat.gov.in

Instructions for filling up IH 102

2. Kindly follow the instructions below in order to help the Hydrographic Office (the recipient) to quickly issue NAVAREA warning / Notice to Mariners for the benefit of all other mariners at sea.

Position Reporting

3. Accurate position or knowledge of position error is of great importance. Latitude and Longitude should only be used to specify position details when they have been fixed by GPS or Astronomical Observations. A full description of the method, equipment, time and datum (WGS 84/ Everest/ Other) used should be given. When position is defined by sextant angles or bearings (true or magnetic to be specified), more than two bearings should be used in order to provide a redundancy check. Distances observed by Radar should be corrected for index errors. Where position is derived after the event, from other observations and/or Dead Reckoning, the methodology of deriving the position should be included.

4. Paper Charts. A copy/tracing of largest scale chart is the best medium for forwarding details, the alterations and additions being shown thereon in red, but adequate details from the chart must be traced in black ink to enable the amendments to be fitted correctly.

5. ENCs. A Screen shot of largest scale usage band ENC with the alterations and additions being shown thereon in red. If it is to report an issue with the display of an ENC, a screen shot of the affected cell should be sent along with details of the ECDIS make and version in use at the time.

Depth Reporting

6. When soundings are obtained using echo sounders, the echo sounding trace should be duly annotated with date, times, position, depths, etc., and forwarded with the IH102. It is important to state whether the echo sounder is set to register depths below the surface or below the keel; in the latter case the vessel's draught should be given. Time and date should be given in order that corrections for the height of the tide may be made where necessary. The make, name and type of echo sounder should also be given.

7. For modern echo sounders that use electronic 'range gating', care should be taken that the correct range scale and appropriate gate width are in use. Older electro-mechanical echo sounders frequently record signals from echoes received back after one or more rotations of the stylus have been completed. Thus with a set whose maximum range is 500m, an echo recorded at 50m may be from depths of 50m, 550m or even 1050m. Soundings recorded beyond the set's nominal range can usually be recognised by the following:

- (a) The trace being weaker than normal for the depth recorded;
- (b) The trace passing through the transmission line;
- (c) The feathery nature of the trace.

As a check that apparently shoal soundings are not due to echoes received beyond the set's nominal range, soundings should be continued until reasonable agreement with charted soundings is reached. However, soundings received after one or more rotations of the stylus can still be useful and should be submitted if they show significant differences from the charted depths. Efforts should be made to identify and negate false echoes if any. The Mariners Handbook (NP100) and Notice 15 Special Edition of Notice to Mariners may be consulted.

8. Reports which cannot be confirmed or are lacking in certain details should not be withheld. Shortcomings should be stressed and any firm expectation of being able to check the information on a succeeding voyage should be notified.

9. Reports of **shoal soundings**, uncharted dangers and aids to navigation out of order should, at the mariner's discretion, also be made by radio to the nearest coast radio station. The draught of modern tankers in such that any uncharted depth under 30 meters or 15 fathoms may be of sufficient importance to justify a radio message.

10. Changes to Port information should be forwarded on Form IH.102A together with form IH.102. Form 102A contains the information required for Sailing Directions and should be used as an *aide memoir*. The Mariners Handbook, NP100, Chapter 8 gives general instructions. Where there is insufficient space on the forms an additional sheet should be used.

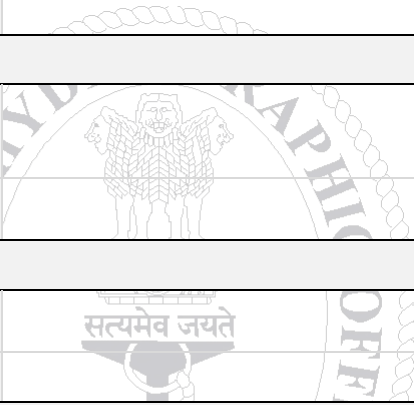

Please Note: - An acknowledgement will be sent by National Hydrographic Office for Hydrographic Notes, on receipt. When a Notice to Mariners is issued, the sender's ship or name is quoted as authority unless the information is also received from other authorities/ foreign Notices to Mariners. Further, communication from National Hydrographic Office to the sender of Hydrographic Notes will only be necessary to verify unusual features or abnormal values reported.



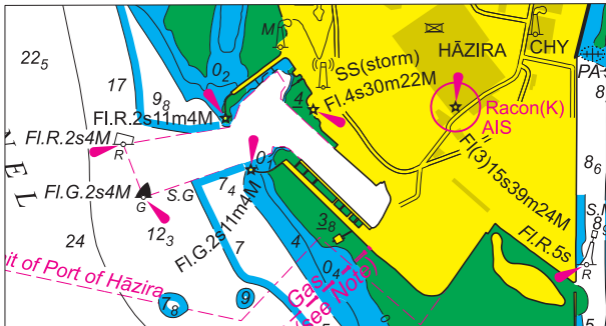
HYDROGRAPHIC NOTE				IH.102 (Revised 2012)	
For Forwarding information for Indian Charts, ENCs and Publications and reporting of ENC related issues					
Date		Ref. Number			
Name of the Ship or Sender					
Address					
Tel/FAX/E-mail address					
Observation Date		Time (UTC/IST)			
Object of Changes Observed (Tick appropriate)	<input type="checkbox"/> Bathymetry	<input type="checkbox"/> Nav. Dangers	<input type="checkbox"/> Nav. aids		
	<input type="checkbox"/> Designated Areas	<input type="checkbox"/> Others			
Geographical Position (See Instructions Overleaf)	Latitude		Longitude		
Position Method	<input type="checkbox"/> DGPS	<input type="checkbox"/> GPS	<input type="checkbox"/> Radar	<input type="checkbox"/> Others	
Datum Used	<input type="checkbox"/> WGS84	<input type="checkbox"/> Everest	<input type="checkbox"/> Others		
Charts Affected				Edition	
Latest Edition of Indian Notices to Mariners Held					
Tracing/Plot/Photograph if enclosed					
ENCs Affected					
Latest Update Disk Held					
Publication Affected				Edition	
Page No./Light No. etc					
Details:					
Limitations if any in Reporting the Changes Above					
Details of Documents/Photos attached:					
Signature of the Master/Reporter/Observer					

HYDROGRAPHIC NOTE FOR PORT INFORMATION (To accompany Form IH.102)		IH.102A (Revised 2012)	
Date		Ref. No.	
Name of the Ship or Sender			
Address			
Tel/Fax/E-mail			
1. NAME OF PORT			
Location	Latitude		Longitude
2. GENERAL REMARKS			
Principal activities and trade			
Number of ships and tonnage handled per year			
Maximum size of draught of vessel handled			
Copy of Port handbook (if available)			
3. ANCHORAGES			
Type / Purpose			
Minimum depth at anchorage			
Shelter afforded			
Holding ground			
Recommended pilotage to the anchorage			
4. PILOTAGE			
Authority for request			
Embarkation position			
Regulations			
Documents to be provided			
Recommended pilotage to approach of Harbour and Berths			
Information on VTMS			
5. DIRECTIONS			
Entry and Berthing Information			
Tides (Height)			
Tidal Stream Information			
Wind Speed and Direction			
Navigational Aids (Beacons / Buoys / Lights / Etc.)			
6. POLLUTION CONTROL			
Local regulation in force (If Any)			
7. TUGS			
Number available / Tug type			
Maximum HP / Bollard pull			

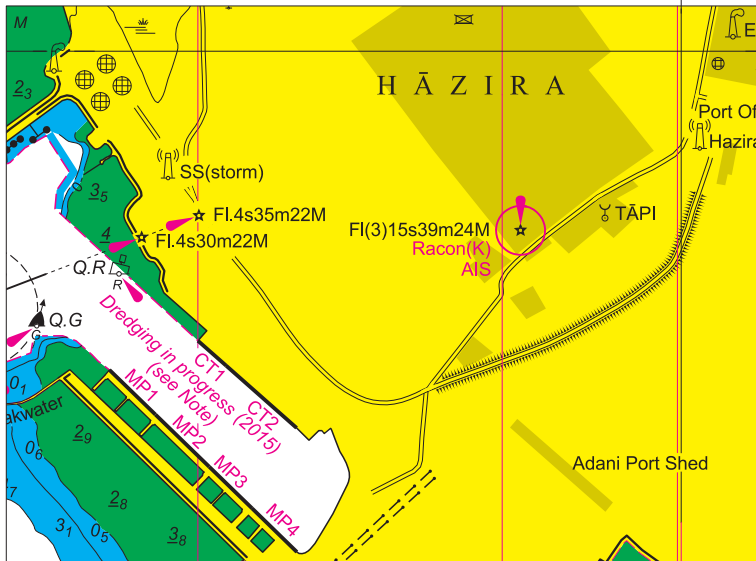
7. TUGS (Continued)	
Requesting authority	
Availability timing / Communication	
Hiring charges	
8. BERTHING AND WHARVES	
Type & Number of berths available	
Length	
Depth alongside	
Facilities available	
Procedure for requesting berth & hiring charges	
9. CARGO HANDLING	
Containers	
Lighters & Ro-Ro etc.	
10. CRANES	
Brief details of Max. lifting capacity, Height of boom at wharf level and Outreach	
Container handling facilities	
11. BRIDGES	
Vertical clearance	
12. REPAIRS	
Hull machinery and underwater	
Ship and Boat yards	
Docking or Slipway facilities (Size/ Dimensions of vessels handled)	
Hards and Ramps	
Divers / Diving assistance	
13. SERVICES	
Radio / FAX / Telephone / Internet etc.	
Medical	
Quarantine	
Consul	
Ship chandlery and Stevedores	
Compass adjustment	
Tank cleaning	
Hull painting	
Police / Ambulance / Firefighting (Fixed and Mobile facilities)	
Nav. Warning and Weather bulletin	
Garbage disposal / Waste oil disposal	
Helicopter landing facilities	

14. RESCUE & DISTRESS	
Salvage, Lifeboat, Life guards, etc	
15. SUPPLIES	
Fuel (Type, Quantities & Method of delivery)	
Fresh water (Method of delivery and Rate of supply)	
Provisions	
Chart agents	
16. COMMUNICATIONS	
Road, Rail and Air services available	
Nearest airport or airfield	
Port Radio and Information Service (Frequencies and Operating Hours)	
17. PORT AUTHORITY	
Designation, Address, Telephone, E-mail Address and Website	
18. SECURITY	
Security of ports / International Ship and Port Facility Security (ISPS) compliance	
Custom and Immigration Regulations in force	
19. SMALL CRAFT FACILITIES	
Information and facilities for small craft, yachts visiting the port	
Yacht clubs, berths etc	
20. SHORT LEAVE	
21. CLUBS RECREATION	
Information Kiosk (Location)	
Foreign Exchange firms / Banks (Within / Near Port Area)	
Places of interest near port	
22. VIEWS	
Photographs(Duly annotated) of the approaches, leading marks, the entrance to the harbour etc.	
23. ADDITIONAL DETAILS	
Any other information considered to be useful for the mariners	
SIGNATURE OF THE OBSERVER / REPORTER / MASTER	

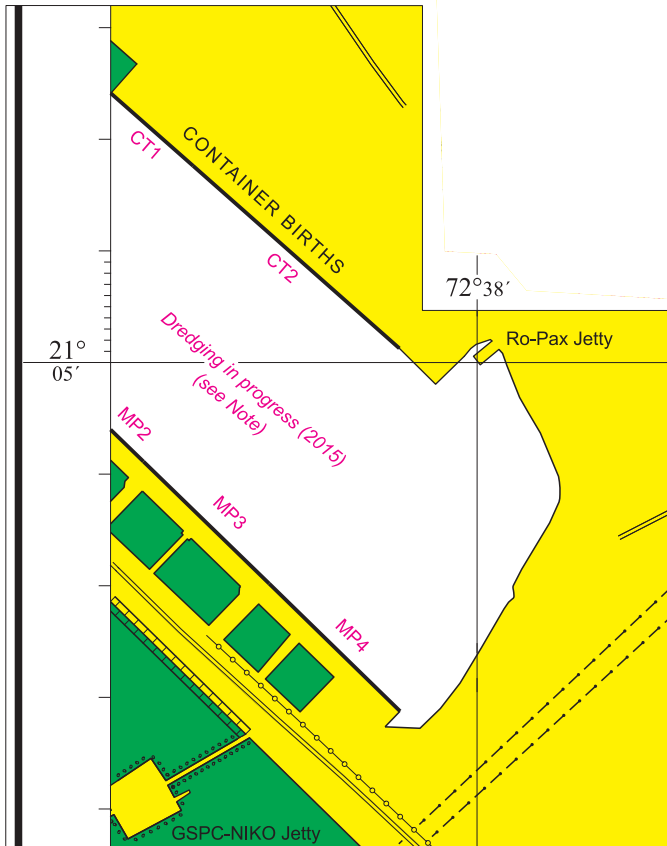
To accompany Indian Notices to Mariners no. 045/2022



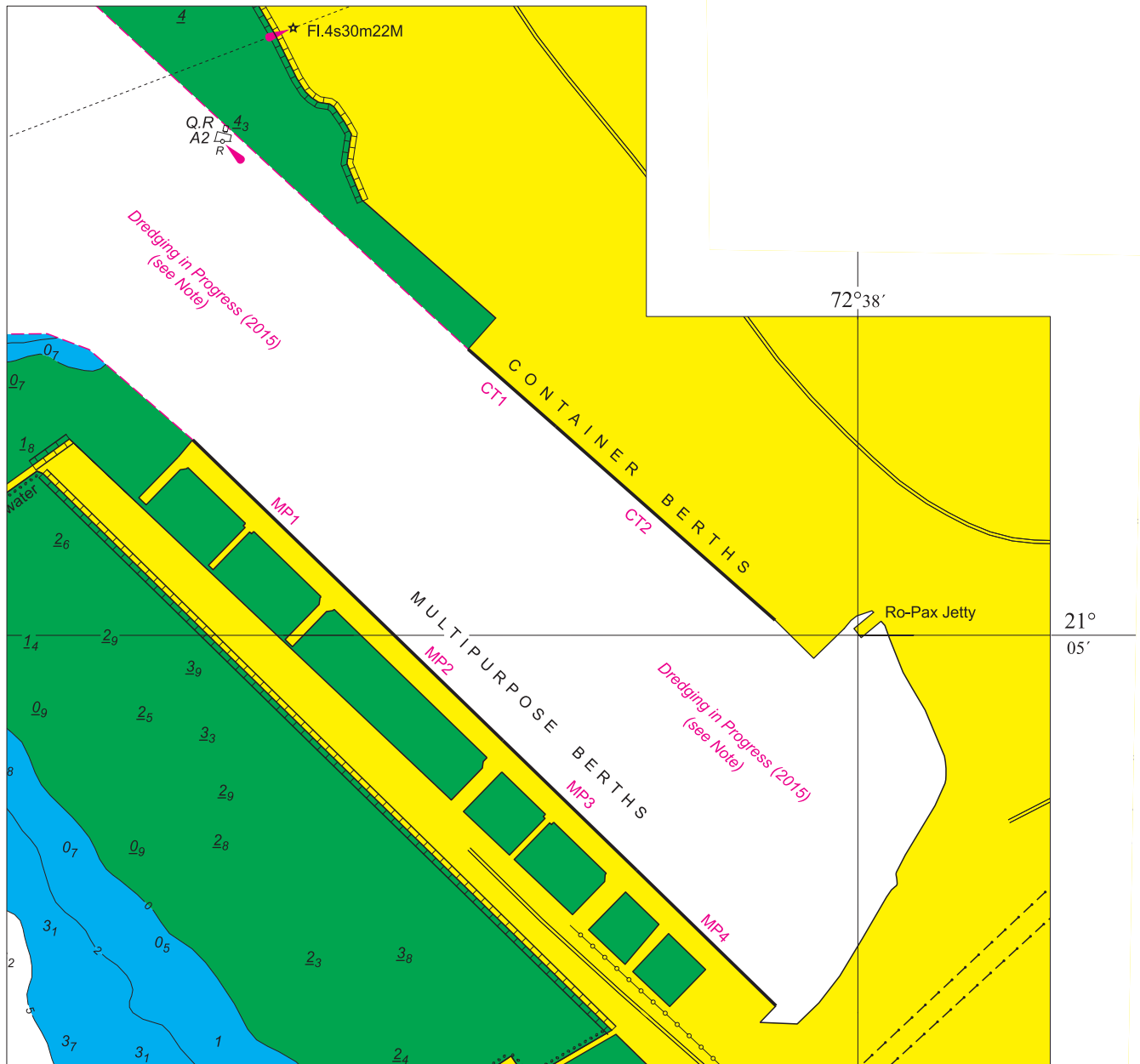
Block correction for chart no. 2044



To accompany Indian Notices to
Mariners no. 045/2022



Block correction for chart no. 2108





FOR 24 X 7 SAR ASSISTANCE IN INDIAN SRR

Email: mrcc-west@indiancoastguard.nic.in

NATION WIDE SAR TELE: 1554 (LAND LINE)

INMARSAT C (IOR) 441907210 CODE: 43 (TOLL FREE)

AFTN: VABBYXYC